



Scientific Session I: From source to sea - ecological boundaries and potential of blue growth

9:40-10:30 Theme I: Improving models to increase the understanding of coastal and lake ecosystems (chair Niina Kotamäki)

- The role of coupled models and scenarios in adaptive water management and policy (Niina Kotamäki)
- Circulation and transport dynamics in the Archipelago Sea (Elina Miettunen)
- Large-scale patterns in community composition and functioning of coastal plankton systems (Veera Norros)
- Impacts of rapid environmental changes on coastal fishery resources (Heikki Peltonen)
- Macrosystem community change in lake phytoplankton and its implications for diversity and function (Benjamin Weigel)

10:30 – 10:40 Break

10:40 – 12:00 Theme II: Linking environment and blue economy (chair Kari Hyytiäinen)

- Introduction to integrated models for protection and management of water resources (Kari Hyytiäinen)
- National-scale nutrient loading under climate change and agricultural mitigation measure scenarios (Markus Huttunen)
- Towards good ecological status at Archipelago Sea - coastal modelling perspective (Janne Ropponen)
- Nutrient load compensation as a means of maintaining the good ecological status of surface waters (Sanna Lötjönen)

- Commentary speech: Turo Hjerppe (YM)
- Open discussion



BlueAdapt

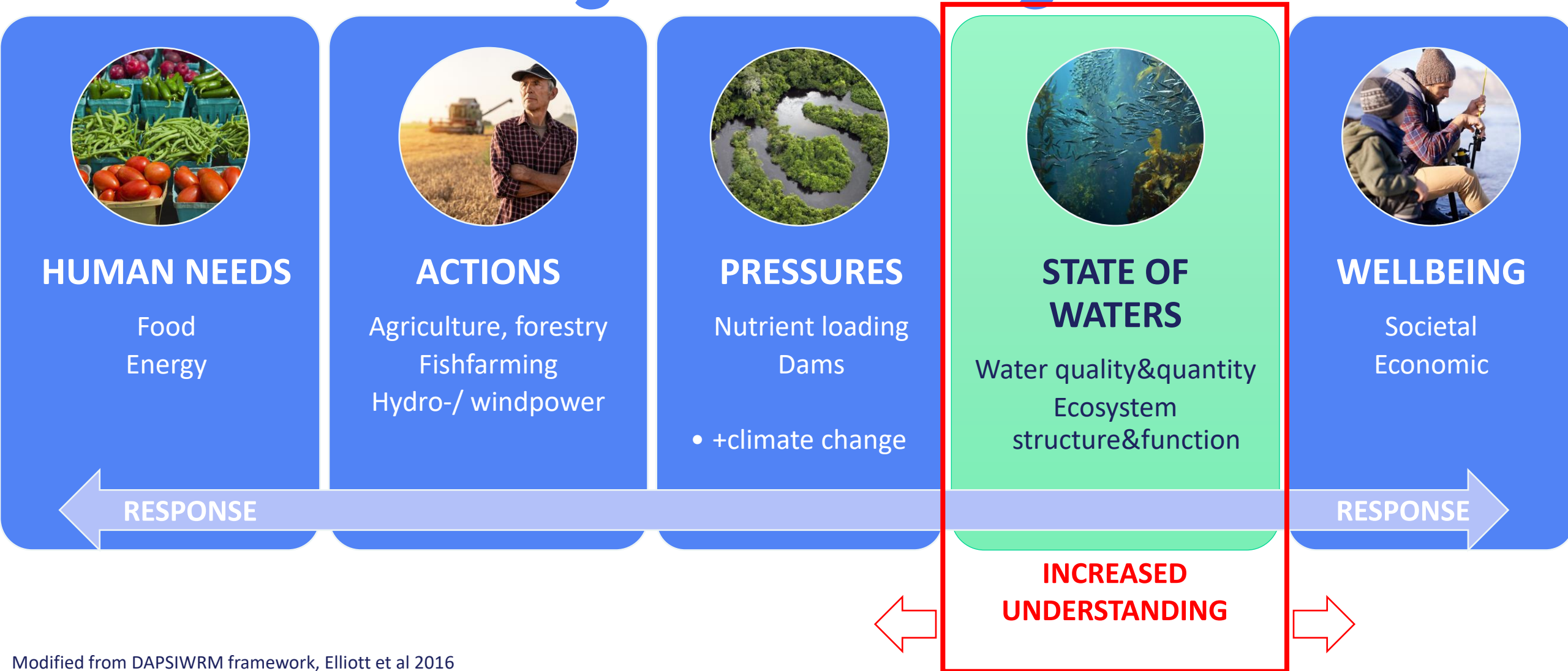
**The role of coupled models and scenarios in
adaptive water management and policy**

Niina Kotamäki, Syke

BlueAdapt final seminar 5.10.2023



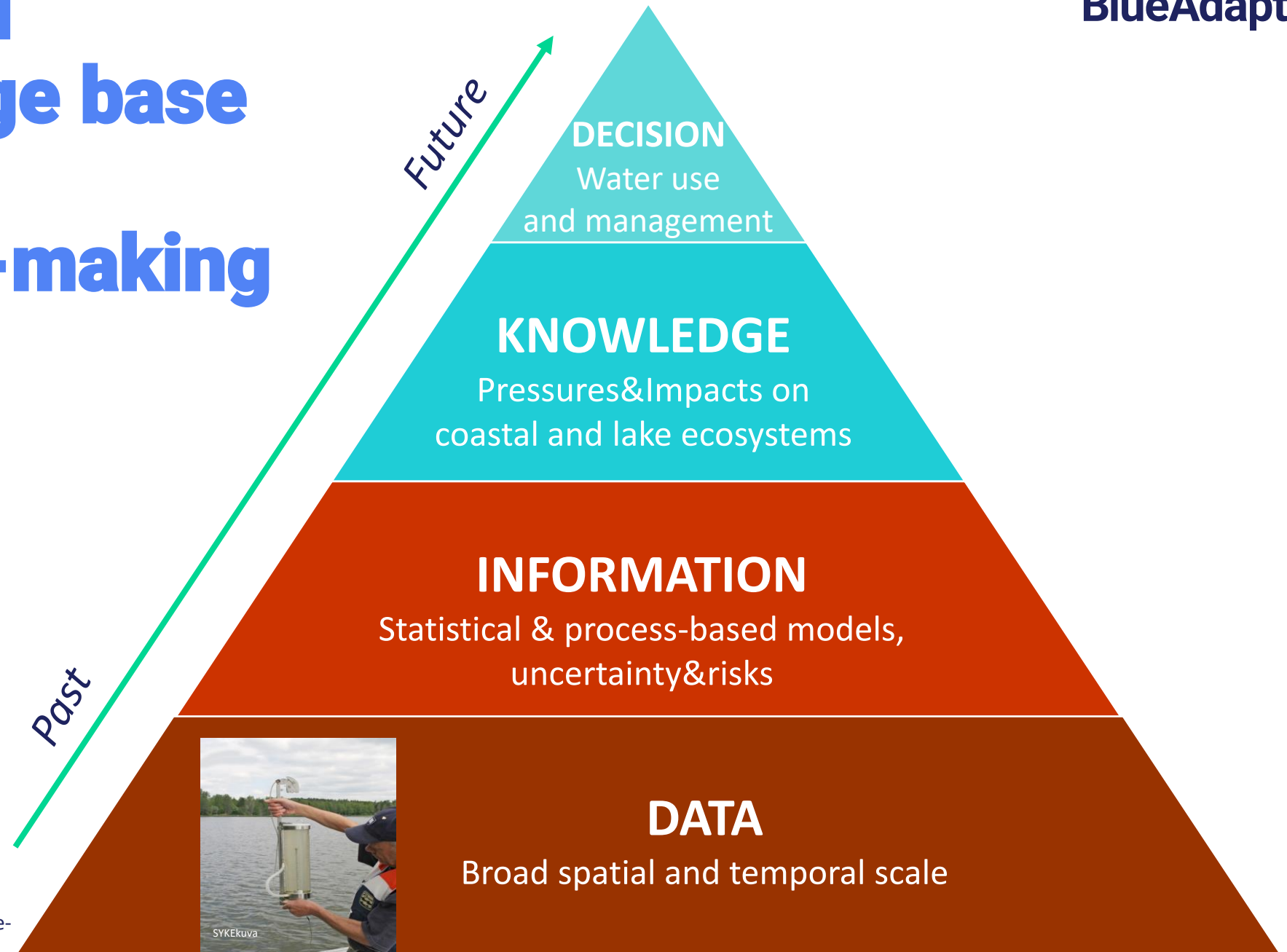
Understanding socio-ecological links





Improved knowledge base supports decision-making

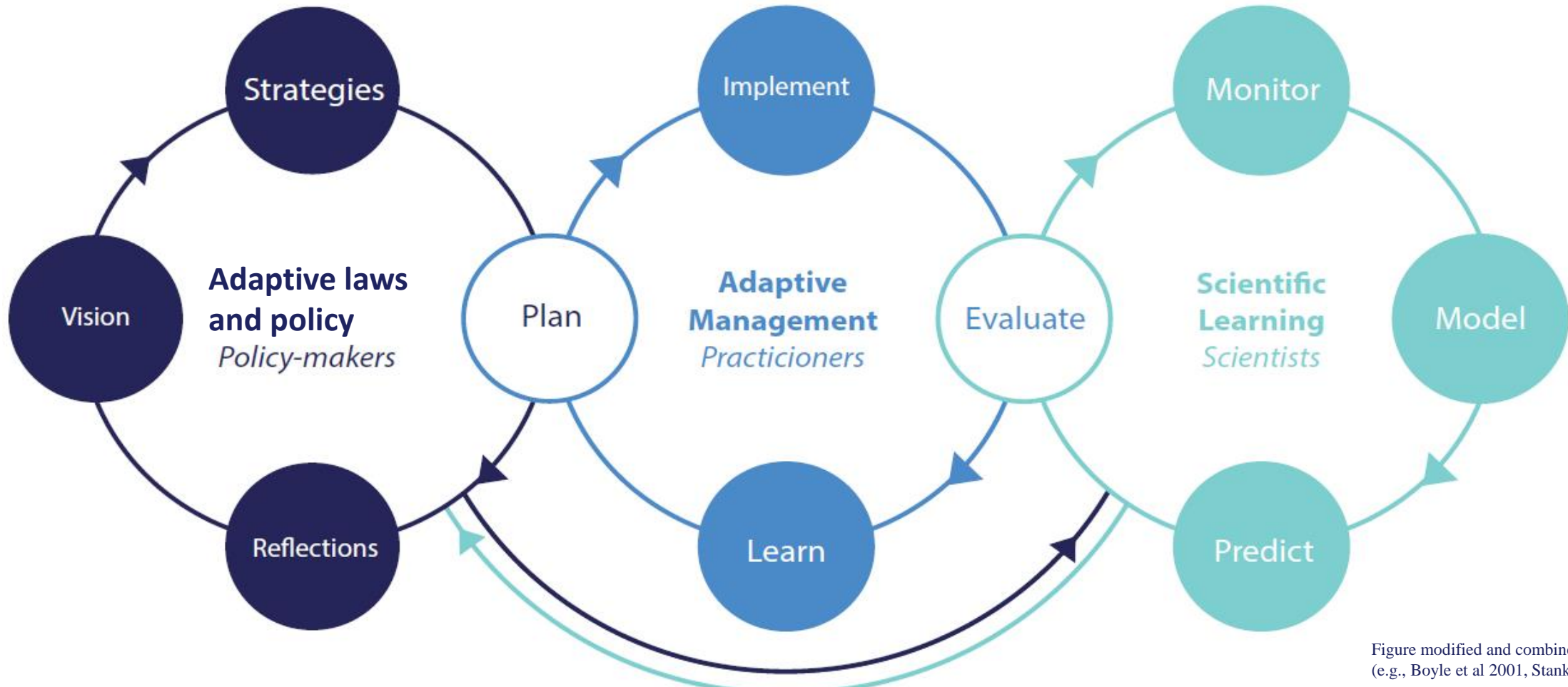
BlueAdapt



Modified data-Information-knowledge-wisdom pyramid orig. by R.L. Ackoff



Adaptive science-policy linkages support the blue transition





BlueAdapt

Thank you!

niina.kotamaki@syke.fi

Scientific articles about changing
aquatic ecosystems:

<https://blueadapt.fi/julkaisut/>



LAPIN YLIOPISTO
UNIVERSITY OF LAPLAND



HELSINGIN YLIOPISTO



UNIVERSITY OF
EASTERN FINLAND



ILMATIETEEN LAITOS

DEMOS
HELSINKI



strateginen TUTKIMUS

